

I-STEM Education in Practice

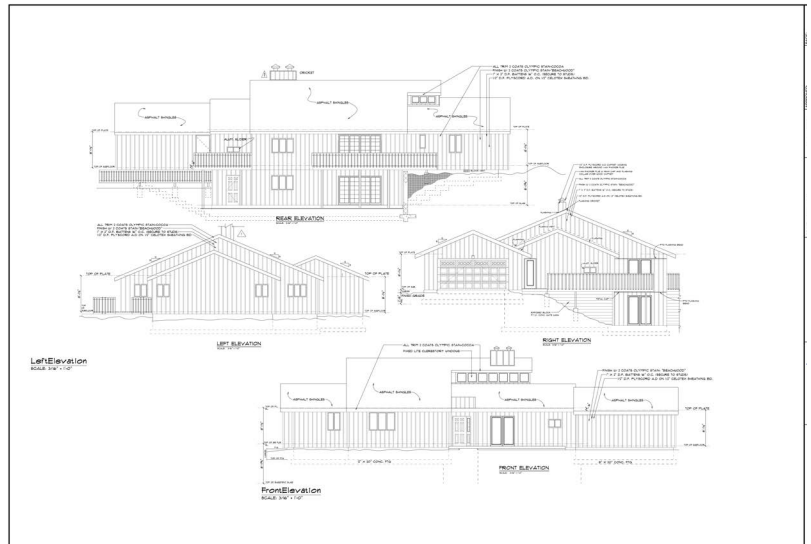
SRHS SAP

Shadow Ridge High School
Signature Architecture Program
Scott Thomas, M.Ed., MCCTE, CD

- 2015 ACTE National Outstanding Engineering Technology Program
- Architectural Design 1-2, Architectural Design 3-4, Advanced Architectural Design 5-6 Honors, and Advanced Architectural Design 7-8 Honors.

Mathematics, science, writing, and reading assignments are incorporated into the SRHS SAP curriculum in order to assist students in meeting the Arizona ADE CTE competencies, the Arizona ADE Academic Standards, and then successfully pass all components of the Arizona AIMS Test.

SRHS SAP teaches employability (soft) skills, teamwork skills, and leadership skills. The SkillsUSA PDP Modules also reinforce math, reading, and writing competencies that are required by the Arizona ADE Academic Standards and the Arizona ADE CTE Curriculum Standards.



- Residential Design
- Commercial Design
- Structural Steel Detailing / Modeling
- Geographical Information Systems
- Construction Details
- Construction /Building Material Terminology
- Civil Design
- Academic Integration
- Special Needs Integration

Course Objective: This course is an extraordinarily demanding and intense course of study intended to prepare and introduce students to the concepts, best practices, principles, and delineation techniques required for Architectural Engineering and Design Drafting and Structural Steel Detailing and Geographic Information Systems disciplines and software. Students become skilled in the content and skills necessary to become a competent drafter in the field of Architectural Design Delineation (Softplan 2016 Pro), Structural Steel Detailing (SDS/2), Revit 2012, ESRI ArcView 10.0 GIS software. In addition, SRHS SAP students will complete a vast quantity of assignments intended to augment their comprehension base for the successful achievement on the Arizona AIMS Test in math, reading, writing, and science focus areas.

Scott Thomas, M.Ed., MCCTE, CD

- Architectural Design Delineation Instructor at Shadow Ridge High School
- Thomas Design Associates, LLC (Owner)
- Author, Goodheart-Willcox Publishers, Inc.
- Director Emeritus, American Design Drafting Association (ADDA)

